



Ho-Chunk Centre

A Prestigious Address, A Strategic Location - 600 4th St., Sioux City, IA 51101

Ho-Chunk Centre is the most spectacular building on the skyline and is a symbol of the aggressive community spirit of growth in downtown Sioux City. The building is the city's "Center," the hub of the business community with spokes of the skywalk system connecting the Centre with major facilities within the downtown perimeter. Ho-Chunk Centre offers so much more than the "normal" business environment. The building and its surroundings have been carefully designed with aesthetics in mind, because a business address should be more than walls, desks and telephones.

- Card access security system
- On-site management & maintenance
- Attached skywalk with parking ramp access
- Emergency Generators
- Computer-controlled office lighting
- Conference/Meeting Rooms

Full service leases including all utilities, property taxes, insurance, and janitorial services.

Suites ranging in size from 845 sq. ft. to 14,366 sq. ft.

Suite 100

3,520 rsf. Large reception counter and reception area. Eleven (11) enclosed offices and large open area. Kitchenette with in-suite water.

Suite 109

3,147 rsf. Two enclosed offices (or one office and a conference room). Large kitchen/breakroom with in-suite water. Two doors access the suite - main one and a back door that leads into the hallway by the 1st floor restrooms. Sound masking system.

Suite 112

3,030 rsf. Fully Furnished. Modern design with three entrances located on the first floor with windows into the Ho-Chunk Centre atrium. One private office with a separate entrance, in-suite restroom, break-room with kitchen, large open area for cubicles, and storage area.

Suite 202

3,359 rsf. Ten (10) enclosed offices, large open area, conference room and shared breakroom and restroom.

Suite 213

1071 rsf. Two (2) enclosed offices. In-suite private restroom. Kitchenette. Reception Area. Extensive window frontage with view of Atrium and exterior West Plaza

Suite 222

1,432 rsf. In-Suite restroom. Four (4) enclosed offices. Conference Room. Front Reception Area

Suite 227

845 rsf. Three (3) enclosed offices. Large Open work area. Remove from business directory:

Suite 231

1,751 rsf. In-suite restroom and kitchenette with in-suite water. Three (3) enclosed offices. Large open area.

Suite 400 (all of 4th Floor)

14,366 rsf. Entire floor consists of two (2) private offices and large open work areas. In-suite conference room, kitchen and restrooms. Built-in projection screens (in ceiling).

Suite 500

3,844 rsf. Five (5) private offices and a large reception counter. In-suite private restroom. Breakroom and storeroom. Conveniently located just off elevator lobby.

Suite 502

1,268 rsf. Five (5) private offices. Reception counter/office workspace. Waiting Room area.

Suite 505

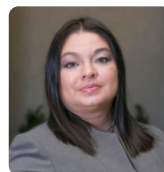
1,300 rsf. One (1) private office. Large open pullpen office set-up. Southern window exposure.

Suite 703

1,503 rsf. Four (4) private offices (two offices large enough to be a conference room). Reception area.

Suite 950

5,455 rsf. Five (5) private offices. Conference Room. Large open work area.



For leasing contact:

Alexcia Boggs

📞 712.522.2397

📠 712.253.1831

✉️ aboggs@hochunkinc.com